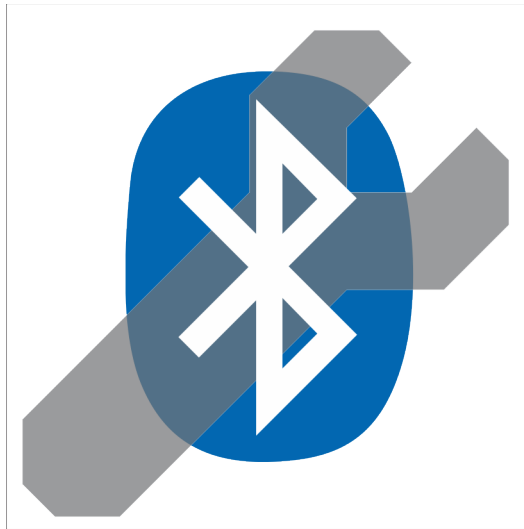


# BlueTooth Assistant™

## User Guide

Ver. 1.00



## **System Compatibility**

Bluetooth Assistant™ is compatible with the following Microsoft Windows® operating systems:

- Windows XP SP3®
- Windows Vista®
- Windows 7®
- Windows 8®
- Windows 10®

Your computer must have either built in Bluetooth support (most modern laptop have this) or a USB Bluetooth adapter – you can buy one from B&C Technologies by ordering part number 370-156. Almost any commercial Bluetooth adapter will work. The Bluetooth Assistant is also useful for programming the EL6 with a USB-Serial Adapter, as it can automatically map a COM port for the EL6 Win 2 software – no more digging into the Device Manager!

## **Description**

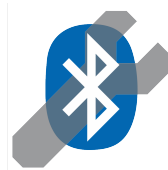
The handy Bluetooth Assistant utility was designed by B&C to be EASY. Its used in conjunction with the EL6win2 programming software. When launched it finds only B&C's FM7 washing machine controls or any connected USB to serial adapters. Bluetooth Assistant automates installing and cleaning up the Bluetooth drivers, and mapping COM ports. It can also be used to map com ports for older EL6 controls, or any other equipment using serial ports.

## **Installation**

To download the installer, open your browser and go to:

<http://bandctech.com/service.php#controlmanuals>

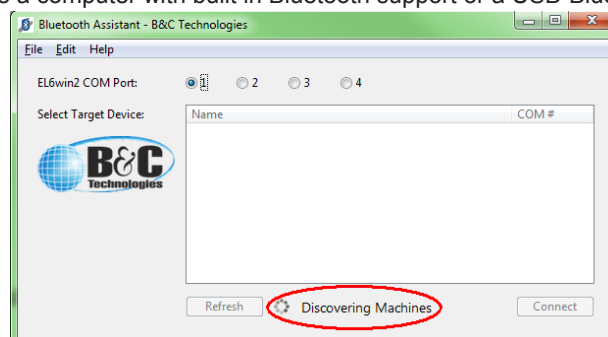
Once on the web page, Look for the text **FM7 Bluetooth Assistant Software** highlighted in blue – that's the download link. Run the installer and follow the installation dialogue. When completed you will find the Bluetooth Assistant icon on your desktop:



## **Operation**

After installation:

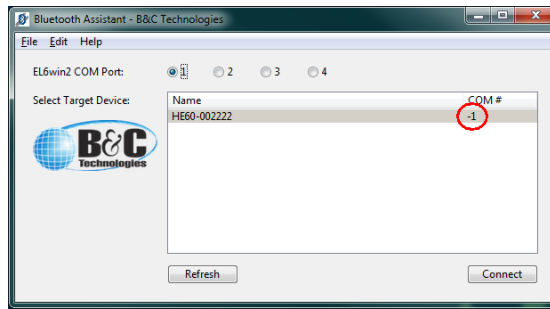
- Make sure you have a computer with built in Bluetooth support or a USB-Bluetooth adapter connected.



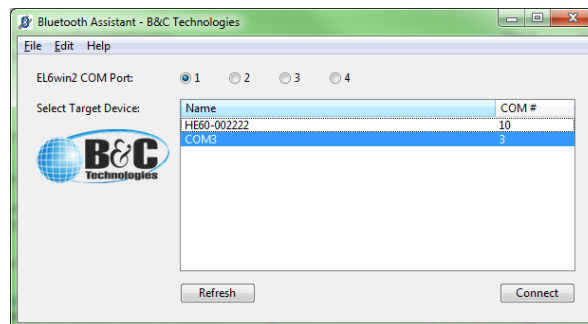
- Launch Bluetooth Assistant. Be patient while the program starts and discovers available machines. At first you will see the window above - notice the text at the bottom of the window next to the moving circle which says "Discovering Machines". The utility is scanning for washing machines and attaching to them... let it do the work for you.
- DO NOT use the system bluetooth dialog to mount the washing machines – doing so will generally cause

conflicts.

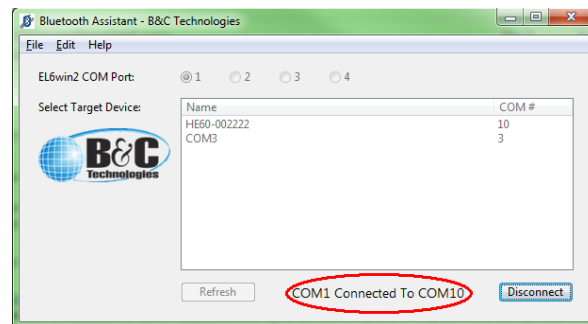
- After scanning your window will look something like this:



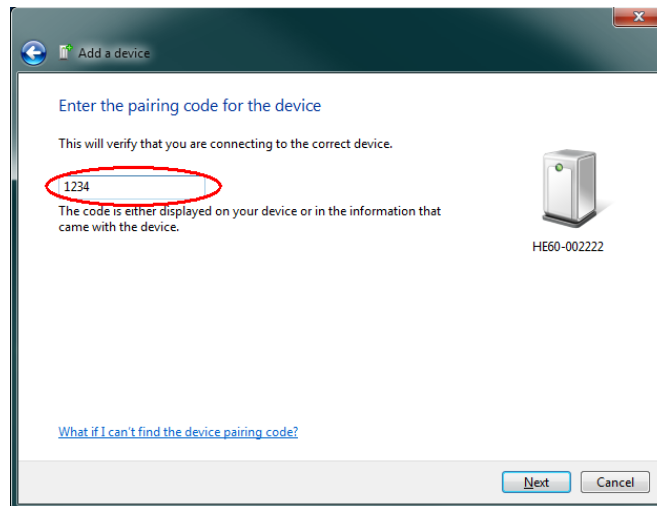
- Occasionally you might get a machine with a com port number of "-1" as circled above. This means windows didn't install the driver properly. To fix it, just press the "Refresh" button and it will usually correct the issue. If refresh doesn't work reboot and try again.
- When everything is ready to go the dialogue will look like this



- FM7 equipped machines will show up listed by model and serial number (ex. "HE60-002222" in the picture above). Other com ports will show up identified by the com port number (ex. "COM3" in the picture above). To find the model and serial number of any B&C washer-extractor, simply open the door and look at the serial sticker by the hinge.
- To connect to a machine or com port, simply select it in the list and then click "Connect". In the example below, HE60-002222 is mounted on com10, and mapped to com1 for the EL6 software or other applications to access it.



- If you need to use a com port other than 1 for your EL6 software, simply use the "1, 2, 3, 4" radio buttons to make your selection before clicking connect.
- Now that you've connected to your washer or serial port, launch the EL6win 2 or other programming application and program your machine.
- During this process you will see a system notification at the task bar saying "A bluetooth device is trying to connect". When you see that message, click on it and the following dialogue box will come up. Enter the pairing code, it will always be "1234", then click "Next" to confirm that you want to pair to the washer.



- If you have multiple machines to program do this:
  - select the machine or com port to program
  - click connect
  - program the machine
  - click disconnect
  - repeat
- When you're all finished, click the red x in the upper right corner of the program window. At the bottom of the window, the message will change to "Cleaning Up". This tells you that the program is asking Windows to clean up the Bluetooth devices and drivers. This usually only takes a few seconds, but may take a 1 or 2 minutes on some computers – be patient and let it do its thing and the program window will close on its own.



### **Tips and Hints**

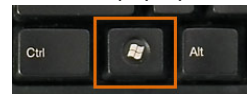
Here are some extra tidbits of help:

- Avoid using the windows system "bluetooth devices" dialogue to manually connect to your FM7 controls. This can create conflicts which the Bluetooth Assistant which it cannot clean up.
- Avoid installing the bluetooth software which comes with some Bluetooth USB adapters. Just connect the adapter and let windows find its own driver for it. The 3<sup>rd</sup> party utilities sometimes replace the windows system components and create compatibility problems with other applications like Bluetooth Assistant.
- In Windows8 and Windows10 the system dialogues may have slightly different messages and appearances. But operation is generally the same.
- If you need to open the Windows Device Manager, there is a handy link in Bluetooth Assistant's "Help" menu
- Don't use Bluetooth Assistant's "Clear Com Ports" function unless its really needed. Having big com port numbers won't usually cause any real problems.

## Troubleshooting

Following are some solutions to problems:

- If you need help with something not listed here, call us! One of our laundry geeks will be thrilled to help get you going! 850-249-2222
- A machine is stuck with a comport number of “-1” – in this case the driver for the device is either corrupted or was improperly installed. To correct it take these actions:
  1. Click the “Refresh” button to rescan for devices, wait for the rescan to finish.
  2. Reboot the computer, then relaunch Bluetooth Assistant, if this doesn’t work, go to the next step...
  3. Open Windows Device Manager using the shortcut in Bluetooth Assistant.
  4. Look for drivers showing up with a yellow triangle and exclamation point, select and delete them
  5. Look for drivers showing up as unknown or “Other Devices”, select and delete them
  6. Restart your computer and start over.
- If your com port numbers go out of range (sometimes greater than 255) then take these steps:
  1. Open Bluetooth Assistant
  2. Select Help
  3. Select “Clear Com Ports”
  4. This resets Window’s “comport reservation system” to clear things up.
- If your computer constantly wants to attach to the internet to install drivers, try this to speed things up:
  - Windows 7 – right click on “Computer” in the system “Start” menu and select “properties”
  - Windows 8 – Press the Windows key and the X key together, and select System from the pop up menu
  - Select “advanced system settings” on the left
  - Select the “Hardware” Tab
  - Select “Device Installation Settings”
  - Select “No, let me choose what to do”
  - Select “Install driver software from Windows Update if its is not found on my computer”



This is what the above steps look like in Windows7:

